

Renewable Energy

Energy resource, such as wind or solar power that can keep producing indefinitely without being depleted.

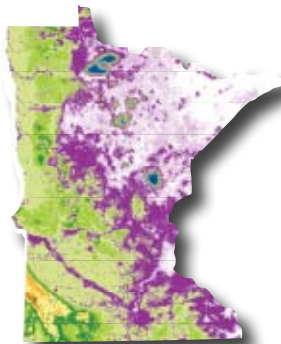
Minnesota is Among the Nation's Leaders in Wind Energy Production

Minnesota ranks fourth behind Texas, California and Iowa as the nation's leaders in wind energy production. Since the construction of the first wind farm in Crookston in 1987, Minnesota has been the Midwest's pioneer for wind energy development. In the past 20 years, over 60 wind farms have sprouted up across Minnesota with a total wind energy capacity of over 1800 MW.

Minnesota has the legislation to prove it believes in wind energy projects and local ownership models. The Minnesota government has instituted renewable energy objectives for utilities, tax incentives and community-based legislation (C-BED statute), all encouraging wind energy developments. The goal of the legislation is to have 25% of energy come from wind resources by 2025.

MN Wind Statistics

as of September 30, 2009



Wind Energy Projects:

Total Installed = 1804.91 MW*
Under Construction = 60.4 MW

Wind Energy Potential:

Annual kWh: 657 Billion
Average Potential Power Output (MW): 75,000

Ranking in U.S.

For potential: 9th**
For current output: 4th

Sources:

* Installed & Projected MW - AWEA

** Wind Energy Potential - An Assessment of the Available Windy Land Area and Wind Energy Potential in the Contiguous United States, Pacific Northwest Laboratory



Capturing the Wind: A Renewable Energy Source

As portions of the earth are heated by the sun, air rushes to fill the low pressure areas, creating wind power. Wind turbines convert wind power to electricity. The power flows through underground lines to a collection point where the power may be combined with other turbines.

Wind energy facilities currently installed in the U.S. will produce enough electricity to serve 2.9 million American homes. This 100% clean source of electricity will displace 23 million tons of carbon dioxide – the leading greenhouse gas – each year.

Wind energy is one of the world's fastest growing resources of electricity. Many experts agree that wind power can supply 20% of America's electricity by 2030; however, currently the United States produces less than 1% of it's electricity from wind resources. Scientists, political leaders, and wind developers are increasing the scope, scale and speed of wind energy development through advances in technology, the passage of renewable energy legislation and financial incentives, and dedication of growing the industry. These are among the manifold factors driving tremendous growth in the past decade.



Yes! I want to sign up for ECO-ENERGY

Date _____

Name on Account _____

Service Address _____

City (circle one): Shakopee Prior Lake

Account Number _____

Phone Number _____

I will be billed a monthly rate of \$1.75 per 100 kWh block of electricity. (Minimum purchase 100 kWh)

I am committed to a minimum enrollment period of 12 months with automatic renewal each year. I understand I will be automatically enrolled in the program each year unless I contact SPU and request to be removed. In the event I move, I can be released from my obligation prior to the 12-month minimum by written request.

I would like to purchase* _____
(#100 kWh blocks)

x \$1.75 = \$ _____

per month to be **ADDED** to my Shakopee Public Utilities bill.

(Name on account must match customer signature.)

Questions? Call 952-233-1524
or visit www.shakopeeutilities.com

*Eco-Energy is not tax deductible.

Already enrolled in Eco-Energy? If so, you will be automatically enrolled at the new rate of \$1.75



Program Details

Eco-Energy is a voluntary program offered to all SPU electric customers. Participation in the program allows you and your family to invest in renewable energy sources by supporting wind power.

Our wind energy is provided by GreenPowerChoice and the Minnesota Municipal Power Agency.

Participation in Eco-Energy:

- ▶ Displaces electricity from fossil fuel sources like coal and natural gas with clean, renewable wind energy.
- ▶ Builds the demand for renewable energy.
- ▶ Helps reduce our dependence on fossil fuels.

Eco-Energy is offered in blocks of 100 kilowatt hours of electricity per month (kWh/month) at a cost of \$1.75 each, which is in addition to your monthly bill. You may purchase from one block to the number of blocks equal to your monthly electricity consumption.

The minimum enrollment period is 12 months with an automatic renewal each year.

To enroll, simply complete the enrollment form and return to:

Shakopee Public Utilities
Post Office Box 470
Shakopee, MN 55379-0470



SHAKOPEE PUBLIC UTILITIES
"Lighting the Way - Yesterday, Today and Beyond"

255 Sarazin Street
Post Office Box 470
Shakopee, Minnesota 55379-0470

Eco-Energy

provided by GreenPowerChoice



SUPPORT WIND ENERGY



SHAKOPEE PUBLIC UTILITIES
"Lighting the Way - Yesterday, Today and Beyond"

www.shakopeeutilities.com

952-233-1524