



Program Details

Eco-Energy is a voluntary program that allows you and your family to support renewable energy.

Participation in Eco-Energy:

- ▶ Displaces electricity from fossil fuel sources like coal and natural gas with clean, renewable wind energy.
- ▶ Builds the demand for renewable energy.
- ▶ Helps reduce our dependence on fossil fuels.

Eco-Energy is offered in blocks of 100 kilowatt hours of electricity per month (kWh/month) at a cost of \$2.00 each, which is in addition to your monthly bill. You may purchase from one block to the number of blocks equal to your monthly electricity consumption.

The minimum enrollment period is 12 months with an automatic renewal each year.

To enroll, simply complete the enrollment form and return to:

Shakopee Public Utilities
Post Office Box 470
Shakopee, MN 55379-0470



SHAKOPEE PUBLIC UTILITIES
"Lighting the Way - Yesterday, Today and Beyond"

255 Sarazin Street
Post Office Box 470
Shakopee, Minnesota 55379-0470

Eco-Energy

Wind energy is one of the fastest growing sources of energy in the world today.



SUPPORT WIND ENERGY



SHAKOPEE PUBLIC UTILITIES
"Lighting the Way - Yesterday, Today and Beyond"

www.shakopeeutilities.com

952-233-1524

•• **Renewable Energy** re-nūw-a-ble en-er-gy (rĭ-nōō'ē-bəl en-er-jee) ••
 •• Energy resource, such as wind or solar power that can keep producing indefinitely without being depleted. ••



“We need a different and better energy future.”

Gov. Tim Pawlenty

Governor Pawlenty's Next Generation Wind Initiative, announced in December, 2006, calls for a dramatic increase in the amount of wind capabilities in Minnesota that are locally owned, increasing wind capacities from 500 mega-watts to 4000-5000 mega watts.

Wind Power: A Popular Energy Source

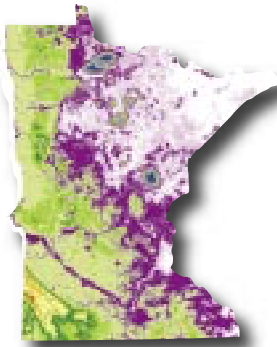
As portions of the earth are heated by the sun, air rushes to fill the low pressure areas, creating wind power. Wind turbines convert wind power to electricity. The power flows through underground lines to a collection point where the power may be combined with other turbines.

Wind energy facilities currently installed in the U.S. will produce enough electricity to serve 2.9 million American homes. This 100% clean source of electricity will displace 23 million tons of carbon dioxide – the leading greenhouse gas – each year.

Minnesota is one of 15 states that have mandates in effect requiring a minimum amount of electricity be supplied by renewable resources.

MN Wind Resource Assessment

Updated: December 31, 2006



Wind Energy Projects:

Total Installed = 895 MW*
 Under Construction = 0 MW

Wind Energy Potential:

Average Power
 Output (MW): 75,000
 Annual kWh: 657 B
 Rank in US: 9th**

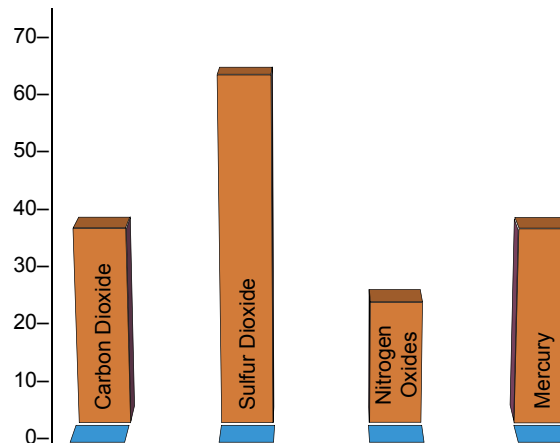
Sources:

* Installed & Projected MW - AWEA

** Wind Energy Potential - An Assessment of the Available Windy Land Area and Wind Energy Potential in the Contiguous United States, Pacific Northwest Laboratory

Leading U.S. Emmissions: Percent from Power Plants

■ Emissions from Power Plants
 ■ Zero Emmissions from Wind



**Yes! I want to sign up for
 ECO-ENERGY**

Date _____

Name on Account _____

Service Address _____

City (circle one): Shakopee Prior Lake

Account Number _____

Phone Number _____

I will be billed a monthly rate of \$2.00 per 100 kWh block of electricity. (Minimum purchase 100 kWh)

I am committed to a minimum enrollment period of 12 months with automatic renewal each year. I understand I will be automatically enrolled in the program each year unless I contact SPU and request to be removed. In the event I move, I can be released from my obligation prior to the 12-month minimum by written request.

I would like to purchase* _____
 (#100 kWh blocks)
 x \$2.00 = \$ _____

per month to be **ADDED** to my Shakopee Public Utilities bill.

 Customer Signature
 (Name on account must match customer signature.)

Questions? Call 952-233-1524
 or visit www.shakopeeutilities.com

*Eco-Energy is not tax deductible.